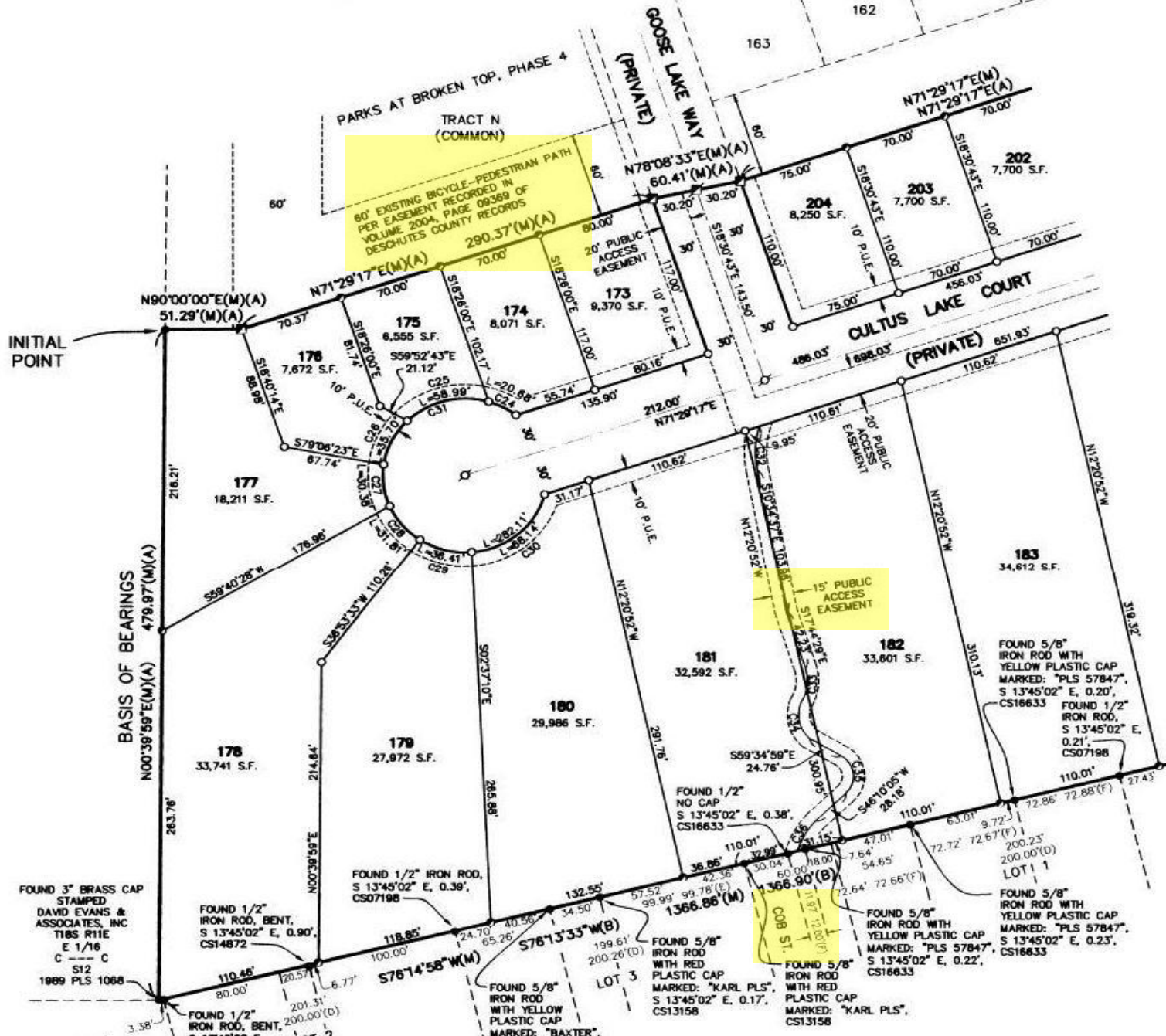




Alpine Trail portion through The Parks

0.9 miles over a mix of aggregate and paved surfaces



INITIAL POINT

BASIS OF BEARINGS

FOUND 3" BRASS CAP
STAMPED
DAVID EVANS &
ASSOCIATES, INC
T18S R11E
E 1/16
C --- C
S12
1989 PLS 1068

FOUND 1/2" IRON ROD, BENT,
S 13°45'02" E, 0.90',
CS14872

FOUND 1/2" IRON ROD,
S 13°45'02" E, 0.39',
CS07198

FOUND 5/8" IRON ROD WITH
YELLOW PLASTIC CAP
MARKED: "BAXTER",

FOUND 5/8" IRON ROD
WITH RED
PLASTIC CAP
MARKED: "KARL PLS",
S 13°45'02" E, 0.17',
CS13158

FOUND 5/8" IRON ROD
WITH RED
PLASTIC CAP
MARKED: "KARL PLS",
CS13158

FOUND 5/8" IRON ROD WITH
YELLOW PLASTIC CAP
MARKED: "PLS 57847",
S 13°45'02" E, 0.22',
CS16633

FOUND 5/8" IRON ROD WITH
YELLOW PLASTIC CAP
MARKED: "PLS 57847",
S 13°45'02" E, 0.23',
CS16633

FOUND 5/8" IRON ROD WITH
YELLOW PLASTIC CAP
MARKED: "PLS 57847",
S 13°45'02" E, 0.20',
CS16633

FOUND 1/2" IRON ROD,
S 13°45'02" E,
0.21',
CS07198

FOUND 1/2" NO CAP
S 13°45'02" E, 0.38',
CS16633

N90°00'00"E(M)(A)
51.29'(M)(A)

80' EXISTING BICYCLE-PEDESTRIAN PATH
PER EASEMENT RECORDED IN
VOLUME 2004, PAGE 09369 OF
DESCHUTES COUNTY RECORDS

N71°29'17"E(M)(A)
290.37'(M)(A)

GOOSE LAKE WAY
(PRIVATE)

PARKS AT BROKEN TOP, PHASE 4
TRACT N
(COMMON)

162

163

N71°29'17"E(M)
N71°29'17"E(A)

204
8,250 S.F.

203
7,700 S.F.

202
7,700 S.F.

175
6,555 S.F.

174
8,071 S.F.

173
9,370 S.F.

177
18,211 S.F.

176
33,741 S.F.

179
27,972 S.F.

180
29,986 S.F.

181
32,592 S.F.

182
33,601 S.F.

183
34,612 S.F.

N00°39'59"E(M)(A)
479.87'(M)(A)

N71°29'17"E(M)(A)
70.00'

S15°26'00"E
10' P.U.E.

S15°26'00"E
10' P.U.E.

S15°26'00"E
10' P.U.E.

S15°26'00"E
10' P.U.E.

S15°26'00"E
10' P.U.E.

S59°40'28"W
176.96'

S59°33'33"W
110.28'

S02°37'07"E
285.88'

N12°20'52"W
281.76'

N12°20'52"W
300.95'

N12°20'52"W
310.13'

N12°20'52"W
318.32'

N00°39'59"E
263.76'

N00°39'59"E
214.84'

S02°37'07"E
285.88'

N12°20'52"W
281.76'

N12°20'52"W
300.95'

N12°20'52"W
310.13'

N12°20'52"W
318.32'

N71°29'17"E(M)(A)
70.00'

S15°26'00"E
10' P.U.E.

S15°26'00"E
10' P.U.E.

S15°26'00"E
10' P.U.E.

S15°26'00"E
10' P.U.E.

S15°26'00"E
10' P.U.E.

S59°40'28"W
176.96'

S59°33'33"W
110.28'

S02°37'07"E
285.88'

N12°20'52"W
281.76'

N12°20'52"W
300.95'

N12°20'52"W
310.13'

N12°20'52"W
318.32'

N00°39'59"E
263.76'

N00°39'59"E
214.84'

S02°37'07"E
285.88'

N12°20'52"W
281.76'

N12°20'52"W
300.95'

N12°20'52"W
310.13'

N12°20'52"W
318.32'

N71°29'17"E(M)(A)
70.00'

S15°26'00"E
10' P.U.E.

S15°26'00"E
10' P.U.E.

S15°26'00"E
10' P.U.E.

S15°26'00"E
10' P.U.E.

S15°26'00"E
10' P.U.E.

S59°40'28"W
176.96'

S59°33'33"W
110.28'

S02°37'07"E
285.88'

N12°20'52"W
281.76'

N12°20'52"W
300.95'

N12°20'52"W
310.13'

N12°20'52"W
318.32'

N00°39'59"E
263.76'

N00°39'59"E
214.84'

S02°37'07"E
285.88'

N12°20'52"W
281.76'

N12°20'52"W
300.95'

N12°20'52"W
310.13'

N12°20'52"W
318.32'

N71°29'17"E(M)(A)
70.00'

S15°26'00"E
10' P.U.E.

S15°26'00"E
10' P.U.E.

S15°26'00"E
10' P.U.E.

S15°26'00"E
10' P.U.E.

S15°26'00"E
10' P.U.E.

S59°40'28"W
176.96'

S59°33'33"W
110.28'

S02°37'07"E
285.88'

N12°20'52"W
281.76'

N12°20'52"W
300.95'

N12°20'52"W
310.13'

N12°20'52"W
318.32'

N00°39'59"E
263.76'

N00°39'59"E
214.84'

S02°37'07"E
285.88'

N12°20'52"W
281.76'

N12°20'52"W
300.95'

N12°20'52"W
310.13'

N12°20'52"W
318.32'

N71°29'17"E(M)(A)
70.00'

S15°26'00"E
10' P.U.E.

S15°26'00"E
10' P.U.E.

S15°26'00"E
10' P.U.E.

S15°26'00"E
10' P.U.E.

S15°26'00"E
10' P.U.E.

S59°40'28"W
176.96'

S59°33'33"W
110.28'

S02°37'07"E
285.88'

N12°20'52"W
281.76'

N12°20'52"W
300.95'

N12°20'52"W
310.13'

N12°20'52"W
318.32'

N00°39'59"E
263.76'

N00°39'59"E
214.84'

S02°37'07"E
285.88'

N12°20'52"W
281.76'

N12°20'52"W
300.95'

N12°20'52"W
310.13'

N12°20'52"W
318.32'

N71°29'17"E(M)(A)
70.00'

S15°26'00"E
10' P.U.E.

S15°26'00"E
10' P.U.E.

S15°26'00"E
10' P.U.E.

S15°26'00"E
10' P.U.E.

S15°26'00"E
10' P.U.E.

S59°40'28"W
176.96'

S59°33'33"W
110.28'

S02°37'07"E
285.88'

N12°20'52"W
281.76'

N12°20'52"W
300.95'

N12°20'52"W
310.13'

N12°20'52"W
318.32'

N00°39'59"E
263.76'

N00°39'59"E
214.84'

S02°37'07"E
285.88'

N12°20'52"W
281.76'

N12°20'52"W
300.95'

N12°20'52"W
310.13'

N12°20'52"W
318.32'

N71°29'17"E(M)(A)
70.00'

S15°26'00"E
10' P.U.E.

S15°26'00"E
10' P.U.E.

S15°26'00"E
10' P.U.E.

S15°26'00"E
10' P.U.E.

S15°26'00"E
10' P.U.E.

S59°40'28"W
176.96'

S59°33'33"W
110.28'

S02°37'07"E
285.88'

N12°20'52"W
281.76'

N12°20'52"W
300.95'

N12°20'52"W
310.13'

N12°20'52"W
318.32'

N00°39'59"E
263.76'

N00°39'59"E
214.84'

S02°37'07"E
285.88'

N12°20'52"W
281.76'

N12°20'52"W
300.95'

N12°20'52"W
310.13'

N12°20'52"W
318.32'

N71°29'17"E(M)(A)
70.00'

S15°26'00"E
10' P.U.E.

S15°26'00"E
10' P.U.E.

S15°26'00"E
10' P.U.E.

S15°26'00"E
10' P.U.E.

S15°26'00"E
10' P.U.E.

S59°40'28"W
176.96'

S59°33'33"W
110.28'

S02°37'07"E
285.88'

N12°20'52"W
281.76'

N12°20'52"W
300.95'

N12°20'52"W
310.13'

N12°20'52"W
318.32'

N00°39'59"E
263.76'

N00°39'59"E
214.84'

S02°37'07"E
285.88'

N12°20'52"W
281.76'

N12°20'52"W
300.95'

N12°20'52"W
310.13'

N12°20'52"W
318.32'

N71°29'17"E(M)(A)
70.00'

S15°26'00"E
10' P.U.E.

S15°26'00"E
10' P.U.E.

S15°26'00"E
10' P.U.E.

S15°26'00"E
10' P.U.E.

S15°26'00"E
10' P.U.E.

S59°40'28"W
176.96'

S59°33'33"W
110.28'

S02°37'07"E
285.88'

N12°20'52"W
281.76'

N12°20'52"W
300.95'

N12°20'52"W
310.13'

N12°20'52"W
318.32'

N00°39'59"E
263.76'

N00°39'59"E
214.84'

S02°37'07"E
285.88'

N12°20'52"W
281.76'

N12°20'52"W
300.95'

N12°20'52"W
310.13'

N12°20'52"W
318.32'

N71°29'17"E(M)(A)
70.00'

S15°26'00"E
10' P.U.E.

S15°26'00"E
10' P.U.E.

S15°26'00"E
10' P.U.E.

S15°26'00"E
10' P.U.E.